



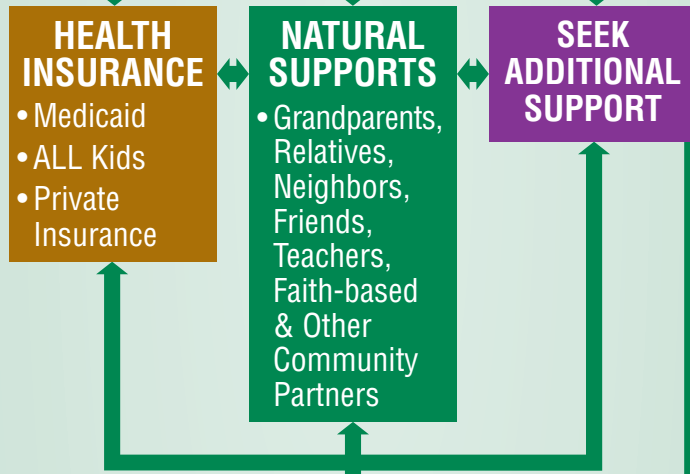
FAMILY (lifespan)

Families are the primary decision makers for children's healthy development. Families are responsible for:

- Choosing culturally and linguistically competent support and service providers
- Setting goals
- Designing, implementing, and evaluating programs
- Monitoring outcomes
- Partnering in funding decisions
- Engaging in policy and procedure governing care for all children

When a **CHILD** demonstrates a need

PARENTS/CAREGIVERS respond to a child's needs by providing care and seeking additional resources



ADVOCACY **MONITOR PROGRESS**

DECISION MAKING

DEPARTMENT OF HUMAN RESOURCES
 • FOOD ASSISTANCE DIVISION Supplemental Nutrition Assistance Program (SNAP)
 • FAMILY ASSISTANCE DIVISION Temporary Assistance for Needy Families (TANF)

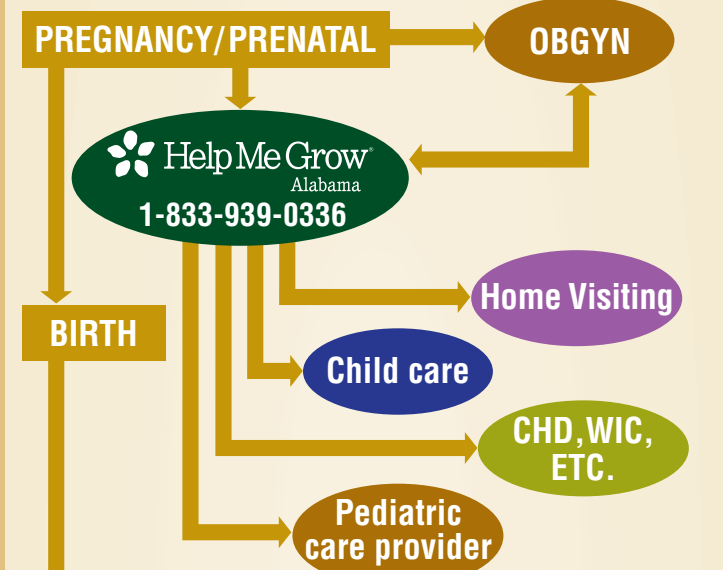
ALABAMA NETWORK OF FAMILY RESOURCE CENTERS

COMMUNITY ACTION AGENCIES

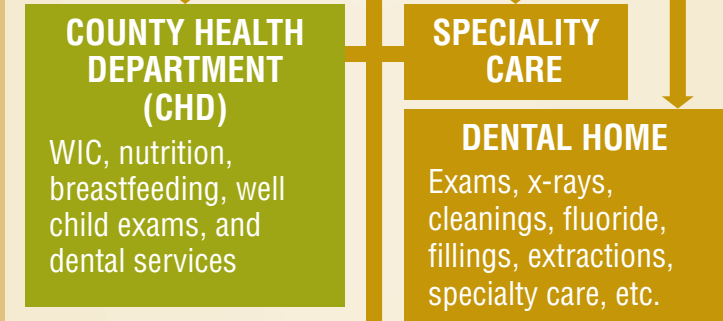


HEALTH SERVICES (Medical, Dental, and Mental/Behavioral)

Families should utilize preventive care services available, including screenings, and connect to a medical and dental home.



MEDICAL HOME PEDIATRICIAN, FAMILY PHYSICIAN
 Preventive care: immunizations, well child exams including dental, hearing, vision and developmental screening
 Coverage through Medicaid EPSDT, ALL Kids, or private insurance

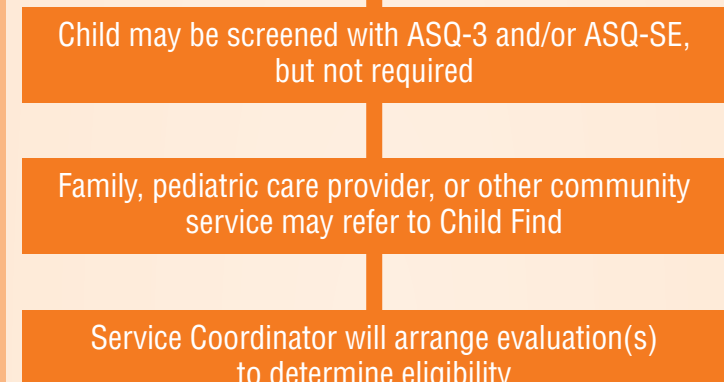


Developmental, Behavioral and/or Social-Emotional Concerns



ALABAMA'S EARLY INTERVENTION SYSTEM (ages 0 through 2)

Early Intervention is a voluntary system for children who meet eligibility criteria with developmental delays or conditions known to cause developmental delays in one or more of the following: physical, communication, cognitive, adaptive, social or emotional.



Service Coordinator will arrange evaluation(s) to determine eligibility



Home health provider, community resources, and/or developmental monitoring and support

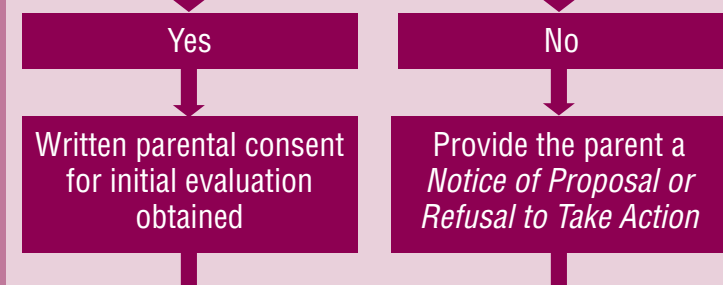
At age 3, transition to LEA and/or HMG with family's permission



SERVICES FOR PRESCHOOL CHILDREN WITH DISABILITIES (ages 3 through 5)

Special education services are provided for preschool children with disabilities who meet eligibility criteria of the *Alabama Administrative Code*. To qualify, the disability must adversely affect the child's participation and progress in age appropriate activities.

Request for Initial Evaluation received by Local Education Agency (LEA)
 Individualized Education Program (IEP) Team determines the need for evaluation



Initial evaluation completed within 60 days of LEA receipt of consent for the initial evaluation
 Eligibility for special education services determined within 30 days of completion of initial evaluation. If eligible...

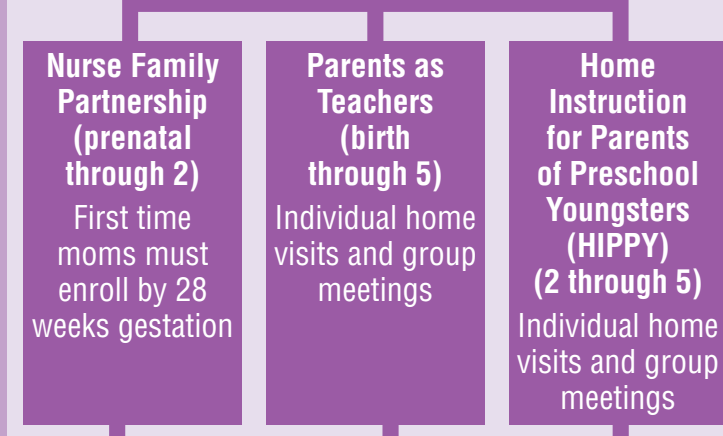
IEP developed by team within 30 days of eligibility determination
 Written parental consent obtained for provision of special education services in the LEA

Home health provider, community resources, and/or developmental monitoring and support

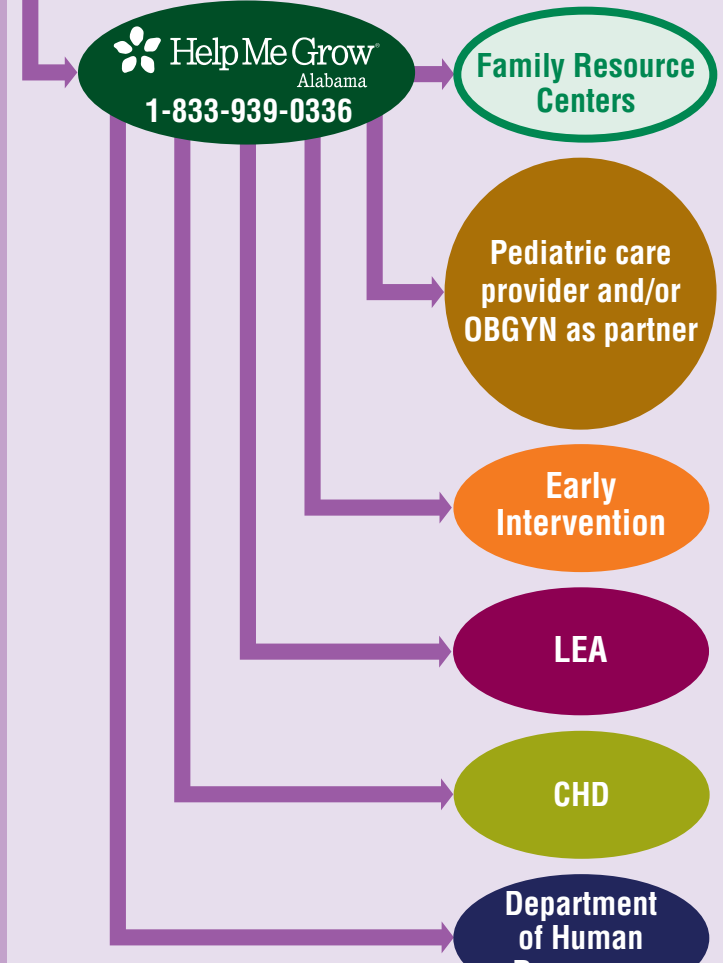


HOME VISITING (prenatal through age 5)

Home Visiting programs exist throughout the state to provide services to help strengthen at-risk families. Primary models include:



Home Visiting programs conduct screenings that address the following areas:
 • Access to Health Care
 • Mental Health of Family
 • Social-Emotional Development
 • School Readiness
 • Child Abuse and Neglect
 • Domestic Violence
 • Developmental Screenings



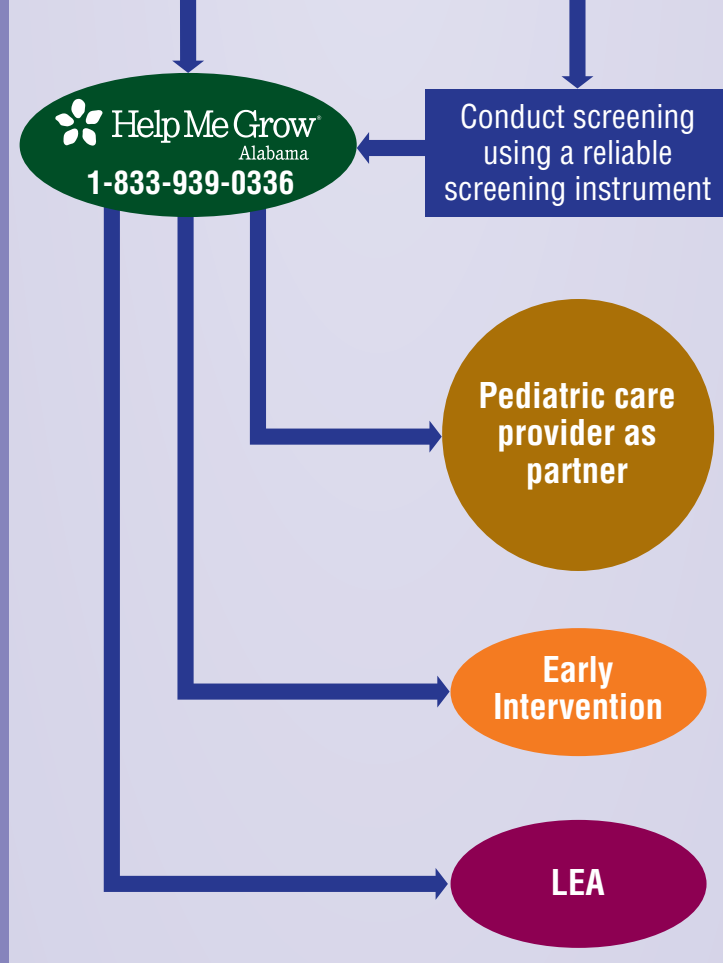
CHILD CARE (age 0+)

Child care includes any quality licensed child care center, certified family home, or half day/preschool.



List of available child care providers for families
 Contact regional Child Care Management Agency
 Contact Department of Human Resources 1-866-528-1694

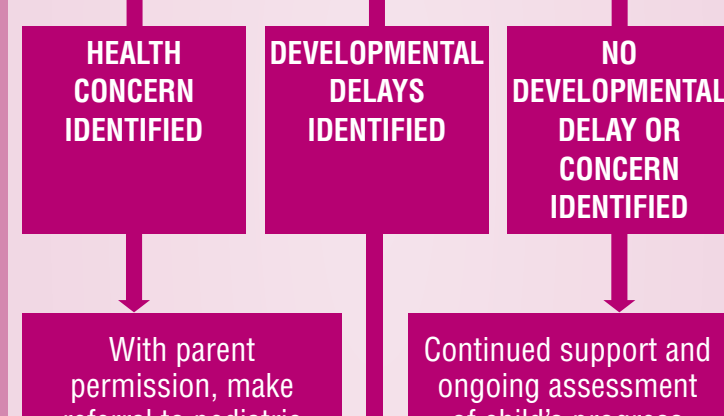
Child experiences social/emotional, behavioral or developmental concerns
 Conduct screening using a reliable screening instrument



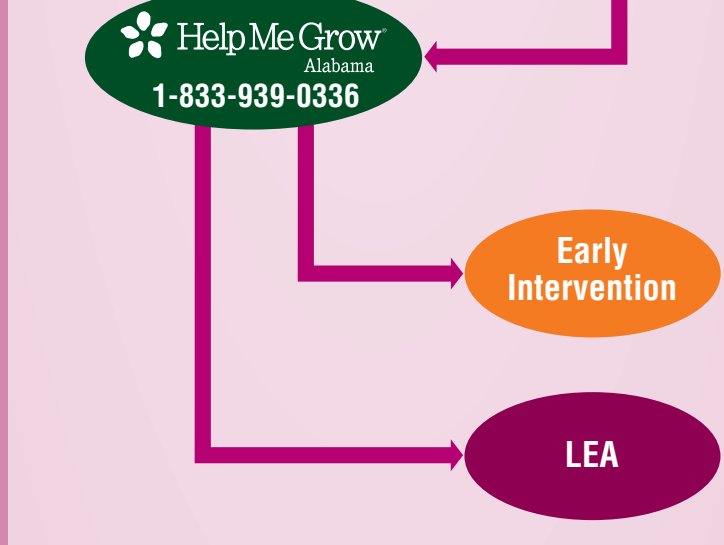
EARLY HEAD START/HEAD START (prenatal through age 5)

Early Head Start/Head Start (EHS/HS) is a federally funded program that serves low income pregnant women and children through age 5. Programs are designed locally based on community needs, may be center-based or home visiting, and promote school readiness.

All EHS/HS children receive comprehensive screening with results discussed with parents: health, developmental, hearing, vision, and dental.



With parent permission, make referral to pediatric care provider
 Continued support and ongoing assessment of child's progress in order to plan and individualize response for each child
 Emerging concerns or lack of progress



FIRST CLASS PRE-K (age 4)

First Class Pre-K is Alabama's state funded pre-kindergarten program. All children who are 4 years old by September 1 of the year and residents of Alabama are eligible.

All Pre-K children receive comprehensive screening with results discussed with parents: health, developmental, hearing, vision, and dental.



With parent permission, make referral to pediatric care provider
 Continued support and ongoing assessment of child's progress in order to plan and individualize response for each child
 Emerging concerns or lack of progress



NOTE:
 Home Visiting
 Early Head Start/Head Start
 and
 First Class Pre-K
 are not available in all areas of the state.

ACCESS GUIDE TO EARLY CHILDHOOD SERVICES FOR CHILDREN AND FAMILIES PRENATAL THROUGH AGE 5

The purpose of this guide is to help early childhood professionals and service providers refer young children (prenatal through age 5) and their families to appropriate Alabama services. The vision is for families to have the support they need across all medical, educational, developmental, and social-emotional services.

Help Me Grow Alabama is a free information and referral line that helps connect families of children birth to age eight to health and developmental resources in their community and provides regular developmental screening at appropriate age intervals.

There are 4 ways to refer a family to Help Me Grow!

- 1 1-833-939-0336 (toll-free)
- 2 helpmegrowalabama.org (online)
- 3 referrals@apcteam.org (email)
- 4 334-356-8230 (fax)

FAMILY

Alabama Family Central is an online directory for families to access services and programs across Alabama. Its purpose is to help families easily navigate and find links to supports they need. | alabamafamilycentral.org

Parenting Assistance Line (PAL) is a call line staffed by parenting resource specialists. PAL is for anyone who wants information and support in becoming a more confident parent. 1-866-962-3030 | pal.ua.edu

Alabama Network of Family Resource Centers are located around the state to serve and assist families by identifying and addressing barriers to success. | anfrc.com/

Community Action Agencies provides direct social services to families with low and moderate incomes. | caaalabama.org

Family Voices of Alabama provides support and information to families who have children with special health care needs and/or disabilities, and the professionals who work with them. 1-877-771-3862 | familyvoicesal.org

The Handbook for Alabama Parents...because babies don't come with instructions. Available as a mobile app by searching "AL Parent Manual" in the app store directly by phone.

Health Services (Medical, Dental, and Mental/Behavioral)

Medicaid 1-800-362-1504 | medicaid.alabama.gov

Well Child Check-Up is a Medicaid program that provides Early, Periodic, Screening, Diagnosis, and Treatment (EPSDT). EPSDT provides preventative health care for children and teens, as well as specialty health care for medically necessary services. | medicaid.alabama.gov/content/4.0_programs/4.4.0_medical_services/4.4.3_EPSDT.aspx

Alabama Children's Health Insurance Program (ALL Kids) is for children under the age of 19 who do not have health insurance and whose family income is above the Medicaid income level and below 300 percent of the federal poverty level. 1-888-373-5437 | alabamapublichealth.gov/allkids/

County Health Departments (CHD) provides immunization, infectious disease services, and case management services. Contact your local CHD to determine if well child exams or dental services are provided. | alabamapublichealth.gov/about/health-departments.html

The Special Supplemental Nutrition Program for Women, Infants, and Children (WIC) is administered by CHD; provides services including food benefits, nutrition education, breastfeeding counseling and support, and referrals for pregnant, breastfeeding, and postpartum women, infants, and children up to age 5 who meet the qualifications for participation in the WIC program. 1-334-206-5673 | alabamapublichealth.gov/wic/

Children's Rehabilitation Service provides quality medical, rehabilitative, coordination and support services for children with special health care needs and their families. 1-800-846-3697 | rehab.alabama.gov/services/crs

Infant and Early Childhood Mental Health Consultation (IECMHC) is an indirect service that provides support for infant and early childhood program staff and parents to address social and emotional concerns of young children and is currently available in limited settings and within limited areas of the state. Children must be enrolled in these settings to receive IECMHC. For information about IECMHC in these specific settings:

- Licensed Child Care Settings – contact First 5 Alabama Coordinator at 1-334-271-0304
- Early Intervention Programs – contact the Director of Infant and Early Childhood Special Programs at the Alabama Department of Mental Health at 1-205-478-4758
- First Class PreK Settings – contact the State Infant and Early Childhood Mental Health Coordinator at the Alabama Department of Early Childhood Education at 1-334-353-2700

First 5 Alabama is the Alabama Association for Infant and Early Childhood Mental Health and supports professionals in obtaining credentials and Endorsement® to provide consultation services in early childhood settings. 1-866-711-4025 | first5alabama.org/

Regional Autism Network works to connect people with autism spectrum disorder, their families, educators, and service providers to the information and/or services that best meet their needs. 1-800-499-1816 | autism.alabama.gov/Regional-Autism-Network.html

Autism Society of Alabama improves services for persons with autism spectrum disorder and their families through education and advocacy. 1-877-428-8476 | autism-alabama.org

Mental Health Providers: The minimum age to access services varies by provider. Please contact the provider for information on services available for those under 6 years of age. | mh.alabama.gov/providers-search/

Alabama Department of Mental Health: Infant and Early Childhood Mental Health Services. | mh.alabama.gov/infant-and-early-childhood-special-programs/

Alabama Department of Mental Health: Autism Services that provides services to those 0 through 20. 1-800-499-1816 | mh.alabama.gov/autism-services/

Psychiatric Intake Response Center (PIRC) is a confidential psychiatric response center designed to assist patients, their loved ones and/or caregivers, and community providers in finding the appropriate level of mental health care. 1-205-638-7472 | childrenal.org/pirc

EARLY INTERVENTION

Child Find is the statewide, toll-free Early Intervention number. 1-800-543-3098 | rehab.alabama.gov/services/ei

SPECIAL EDUCATION

Alabama Department of Education provides oversight and special education services for preschool (age 3) to age 21. | 1-334-242-9700

Alabama Special Education Services 1-334-242-8114 | www.alsde.edu

CHILD CARE

Office of Child Care Subsidy provides Alabama's low and moderate-income families with equal access to affordable and quality child care services. 1-866-528-1694 | dhr.alabama.gov/child-care/subsidy-overview/

Child Care Management Agencies supply resources and referrals for families and child care providers. | dhr.alabama.gov/child-care/subsidy-overview/child-care-management-agencies/

Child Care Quality Enhancement Agencies deliver training and technical assistance for child care providers to improve quality, health, safety, and nutrition. | dhr.alabama.gov/child-care/quality-overview/

OTHER ALABAMA RESOURCES

2-1-1 Connects Alabama is a statewide call system of information and referral whose mission is to provide easy access to health and human services available throughout Alabama. Dial 2-1-1 | 211connectsalabama.org

Alabama Department of Early Childhood Education coordinates First Teacher Home Visitation programs and First Class Pre-K programs, and houses the Head Start Collaboration Office for the state. 1-334-224-3171 | children.alabama.gov

Alabama Disabilities Advocacy Program (ADAP) is the state's protection and advocacy program that advocates for children with special needs. ADAP provides legal services to Alabamians with disabilities to protect, promote and expand their rights. 1-205-348-4928 | adap.ua.edu/

Alabama Interagency Autism Coordinating Council is a network of leaders developing a comprehensive system of care for individuals with autism spectrum disorder and their families. | autism.alabama.gov

Alabama Department of Child Abuse and Neglect Prevention is the state's Children's Trust Fund and advocates for children and the strengthening of families throughout Alabama. 1-334-262-2951 | ctf.alabama.gov

To **Report Child Abuse and Neglect** contact your county Department of Human Resources. | dhr.alabama.gov/county-office-contact/

NATIONAL WEBSITE RESOURCES

American Academy of Child and Adolescent Psychiatry: aacap.org

American Academy of Pediatrics: healthychildren.org

Autism Society of America: autism-society.org

Autism Speaks: autismspeaks.org

Born Learning: bornlearning.org

Born Ready: bornready.org/

Center for Child and Human Development: gucchd.georgetown.edu

Centers for Disease Control and Prevention: cdc.gov

Center for the Study of Social Policy – Strengthening Families Initiative: strengtheningfamilies.net

Center on the Developing Child: developingchild.harvard.edu/

Feed Me Words: feedmewords.org/

First Signs: firstsigns.org

Help Me Grow National: helpmegrownational.org

Learn the Signs. Act Early.: cdc.gov/ncbddd/actearly/index.html

National Federation of Families for Children's Mental Health: ffcmh.org

National Institute of Mental Health: nimh.nih.gov/index.shtml

Reach Out and Read: reachoutandread.org

Substance Abuse Mental Health Services Administration: samhsa.gov

Vroom: joinvroom.org

Zero to Three: zerotothree.org



AN AFFILIATE OF THE NATIONAL NETWORK &
A PROGRAM OF THE ALABAMA PARTNERSHIP FOR CHILDREN

FOR MORE INFORMATION:
www.helpmegrowalabama.org
2595 Bell Road • Montgomery, AL 36117
1-833-939-0336

**PLEASE HELP US
IMPROVE THIS GUIDE!**

Please email comments to referrals@apcteam.org

THIS GUIDE WAS DEVELOPED BY:

Alabama Department of Early Childhood Education: PDG-5
Alabama Department of Mental Health: Project LAUNCH
Alabama Department of Public Health: Early Childhood Comprehensive Systems
Alabama Partnership for Children • Help Me Grow Alabama Leadership Team

"Every Alabama Child Will Have the Opportunity to Succeed in Life"

Design shared by Kentucky Partnership for Families and Children

© Copyright 1/2021

Graphic Design: Rob Gorstein Design